

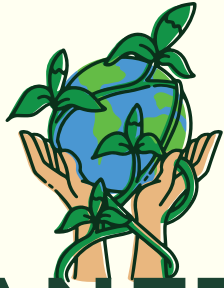


# St. John's

## National Academy of Health Sciences



Offered by : Division Of Health And Humanities, St John's Research Institute and Distance Education Unit, SJMC



# PLANETARY HEALTH

A Practical Course for Health Professionals, Students and Community Workers



### Contact Information

Email : [sonali.sathaye@sjri.res.in](mailto:sonali.sathaye@sjri.res.in)

(CC) : [distance.education@stjohns.in](mailto:distance.education@stjohns.in)

## WHY THIS COURSE?

- Understand the nature and origins of the climate crisis
- Introduce solutions and innovations.
- Learn from doctors and healthcare workers pioneering climate action.
- Discover why non-communicable diseases are increasing worldwide.
- Incorporate eco-friendly strategies into daily professional life.

## COURSE OVERVIEW

A flexible, self-paced course that equips healthcare practitioners, community workers, and students with essential knowledge to address the impacts of the climate crisis. The course has five modules, each 30-40 minutes long, with graded assessments to help you learn.

## WHO CAN ENROLL ?

This course is ideal for:

- Medical College, Allied Health Sciences (AHS) and Nursing Faculty
- Medical & Allied Health Science Students
- Public Health Professionals
- Hospital & Health Administrators
- Biomedical & Health Researchers
- Sociologists, Anthropologists, Psychologists
- All those concerned about the natural world and our relationship with it and each other.

**Certificates will be issued upon successful completion**

**Course fee: Rs 5,900/-including GST**



[CLICK HERE](#)

Enroll Now. Inspire Change. Heal the Planet.